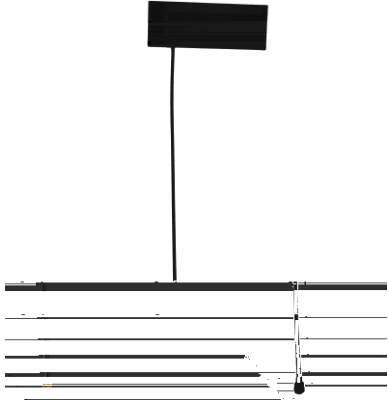
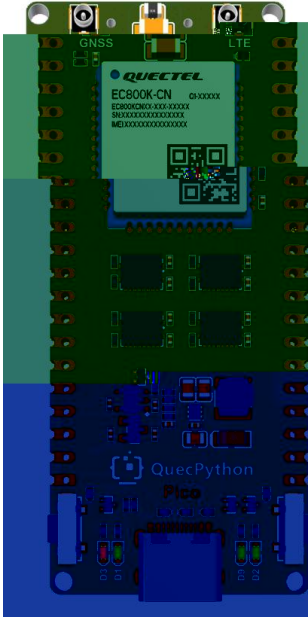


EC800X Pico



1

CA6. . N

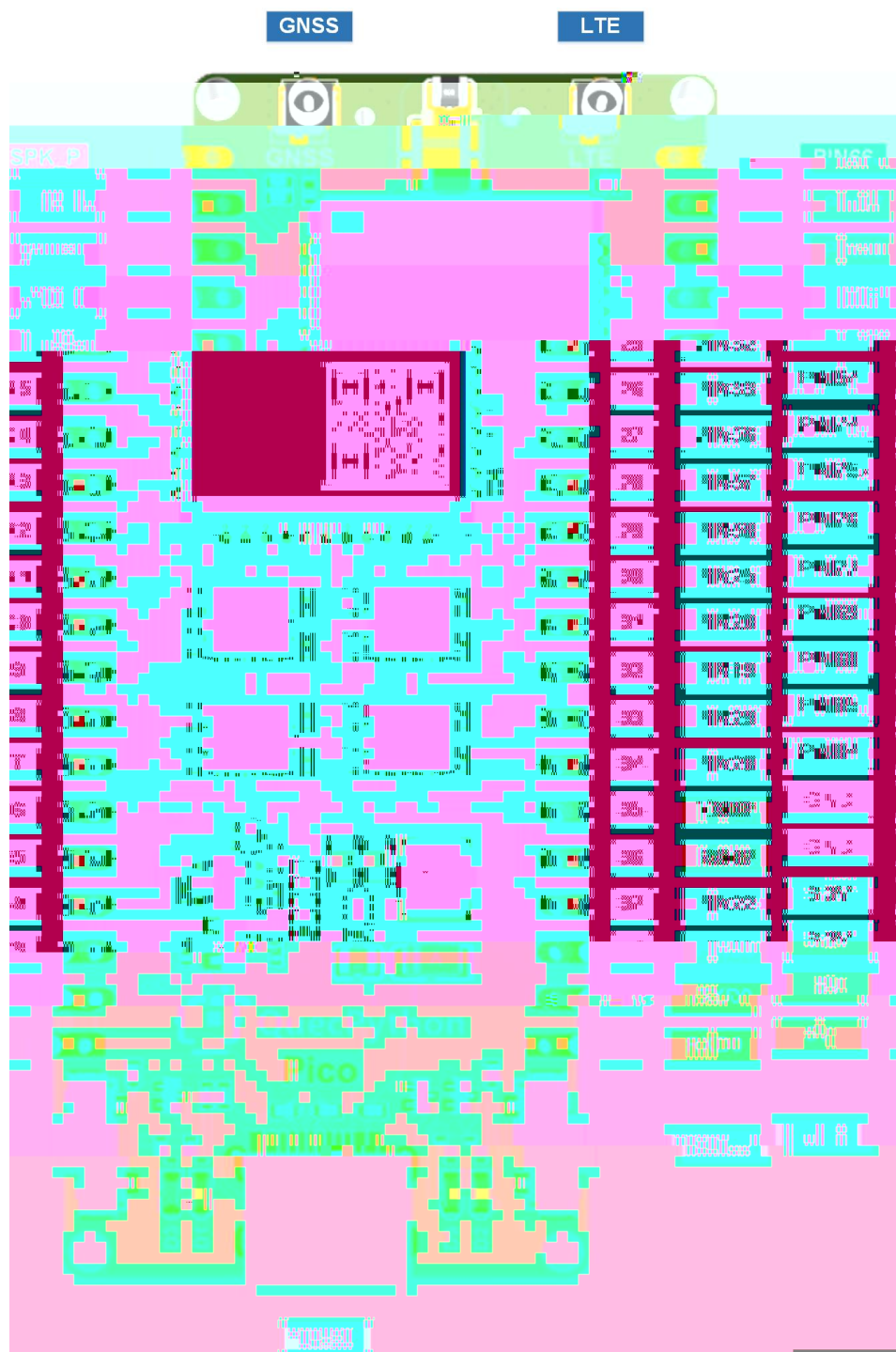


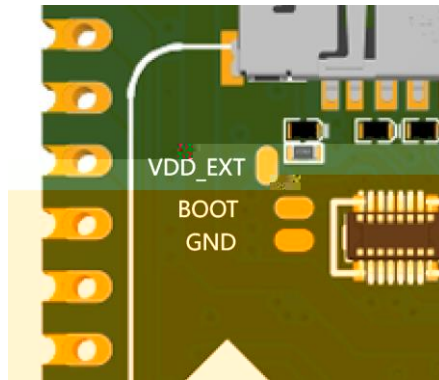
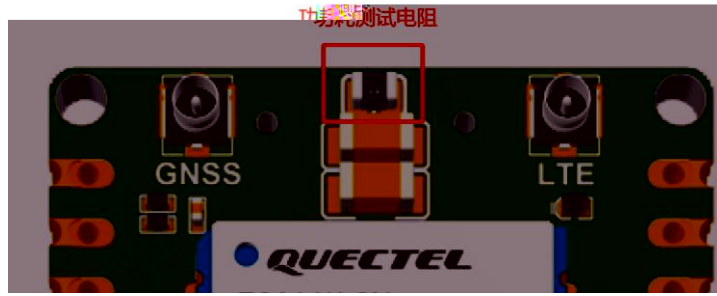
-
-
-
-
-
-
-

m

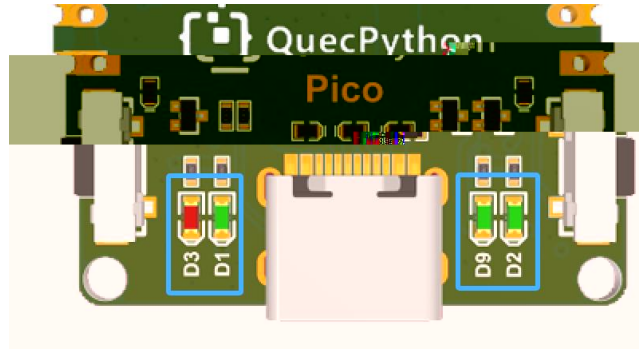
•
•
2
0

于

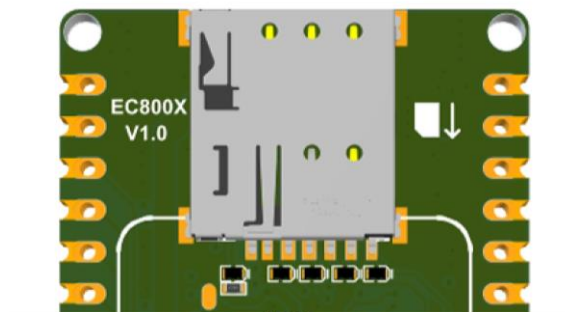




01



3 SIM

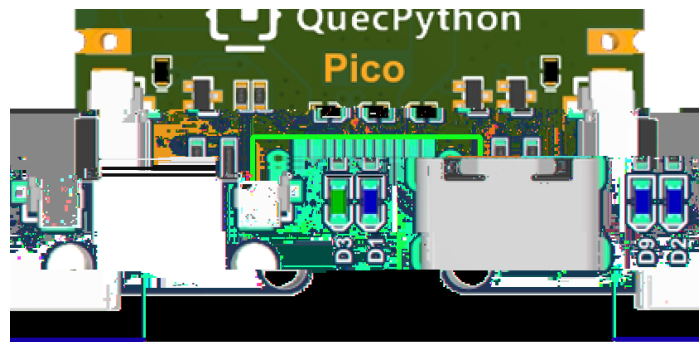


5

台

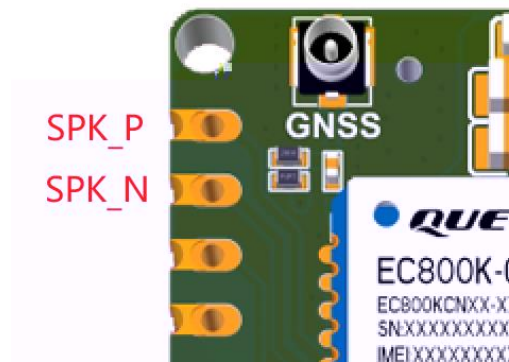
-

4 USB



台

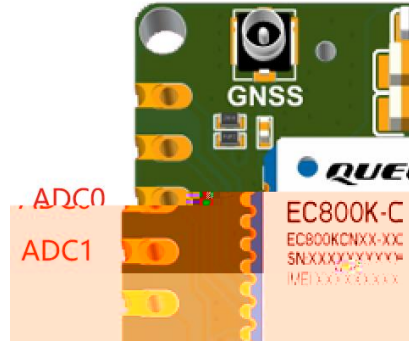
5 SPK



83

-
-

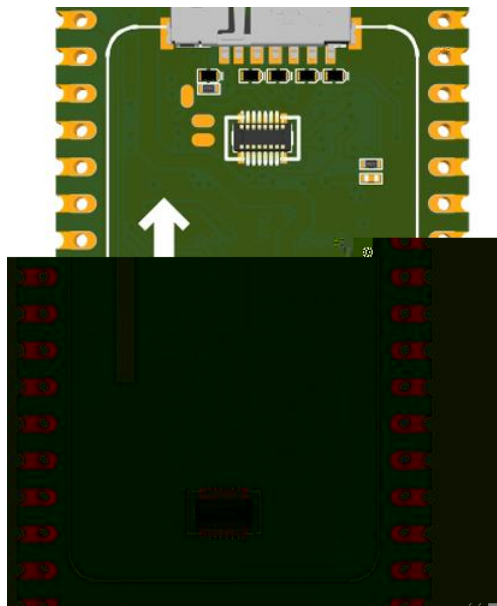
6 ADC

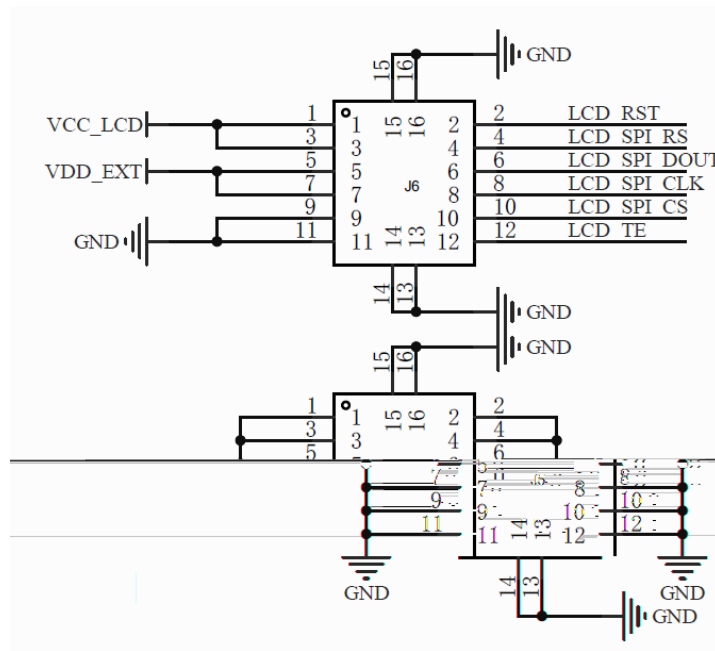


!

参数	最小值	典型值	最大值	单位
ADC0 电压	0	-	1.2	V
ADC1 电压	0	-	1.2	V
ADC 分辨率	-	-	12	位

7 LCD





4

NO.	Item	Contents	Unit
1	LCD Size	1.47	inch
2	Display Mode	Normally black	-
3	Resolution	172(H)RGB x320(V)	pixels
4	Pixel pitch	0.0337(H) x 0.1011(V)	mm
5	Active area	17.3892(H) x 32.352(V)	mm
6	Module size	40.00(H) x 20.00(V) x 4.40 (D)	mm
7	Pixel arrangement	RGB Vertical stripe	
8	Interface	4 Line SPI	
9	Display Colors	262K	
10	Drive IC	ST789V3	
11	Luminance(cd/m2)	350 (TY1)	
12	Viewing Direction	All View	
13	Backlight	3 White LED Paralle	
14	Operating Temp.	-20°C~+70°C	
15	Storage Temp.	-30°C~	
16	Weight	2.7	g

8

6

6

引脚名	引脚号	I/O	描述	备注
ANT_MAIN	35	AIO	主天线接口	50 Ω 特性阻抗。

备注

模块支持 Wi-Fi Scan 功能。由于共用主天线接口，两种功能不可同时使用，时分复用，Wi-Fi Scan 只接收不发送。

工作频段	发送 (MHz)	接收 (MHz)	接收
0~2170	LTE-FDD B1	1920~1980	2110~2170
5~1880	LTE-FDD B3	1710~1785	1805~1880
~894	LTE-FDD B5	824~849	869~894
~960	LTE-FDD B8	880~915	925~960
0~2025	LTE-TDD B34	2010~2025	2010~2025
0~2620	LTE-TDD B38	2570~2620	2570~2620
0~1920	LTE-TDD B39	1880~1920	1880~1920
0~2400	LTE-TDD B40	2300~2400	2300~2400
5~2675	LTE-TDD B41	2535~2675	2535~2675

6 0

频段	最大值	最小值
LTE-FDD B1/B3/B5/B8	23 dBm ±2 dB	< -39 dBm
LTE-TDD B34/B38/B39/B40/B41	23 dBm ±2 dB	< -39 dBm

6 1

频段	接收灵敏度（典型值）（dBm）			3GPP 要求 （主集 + 分集）
	主集	分集	主集 + 分集	
LTE-FDD B1 (10 MHz)	-99.5 dBm	-	-	-96.3 dBm
LTE-FDD B3 (10 MHz)	-99.0 dBm	-	-	-93.3 dBm
LTE-FDD B5 (10 MHz)	-98.5 dBm	-	-	-94.3 dBm
LTE-FDD B8 (10 MHz)	-99.0 dBm	-	-	-93.3 dBm
LTE-TDD B34 (10 MHz)	-100.0 dBm	-	-	-96.3 dBm
LTE-TDD B38 (10 MHz)	-99.0 dBm	-	-	-96.3 dBm
LTE-TDD B39 (10 MHz)	-100.0 dBm	-	-	-96.3 dBm
LTE-TDD B40 (10 MHz)	-100.5 dBm	-	-	-96.3 dBm
LTE-TDD B41 (10 MHz)	-99.0 dBm	-	-	-94.3 dBm

6 0 EL

-
-
-

6 0

600 EL

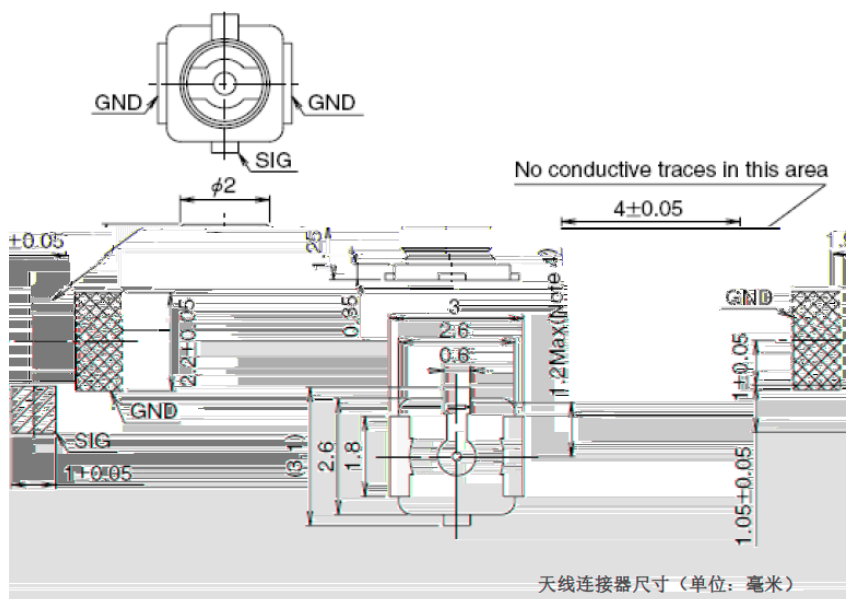
参数	条件	典型值	单位
灵敏度	捕获	-146	dBm
	重捕	-160	
	追踪	-160	
首次定位时间	冷启动 @ 空旷区域	28	s
	温启动 @ 空旷区域	27	
	热启动 @ 空旷区域	3.7-3.8	

备注

1. 追踪灵敏度：模块可以保证对导频信号的跟踪和定位所需的最低信号电平。(持续定位至少3分钟)
2. 重捕灵敏度：模块对刻时的导频信号失锁后3分钟内，重新捕获导频信号并正常定位所需的最低信号电平。
3. 捕获灵敏度：模块进行冷启动后3分钟内，捕获导频信号并成功定位所需的最低信号电平。

61

侧



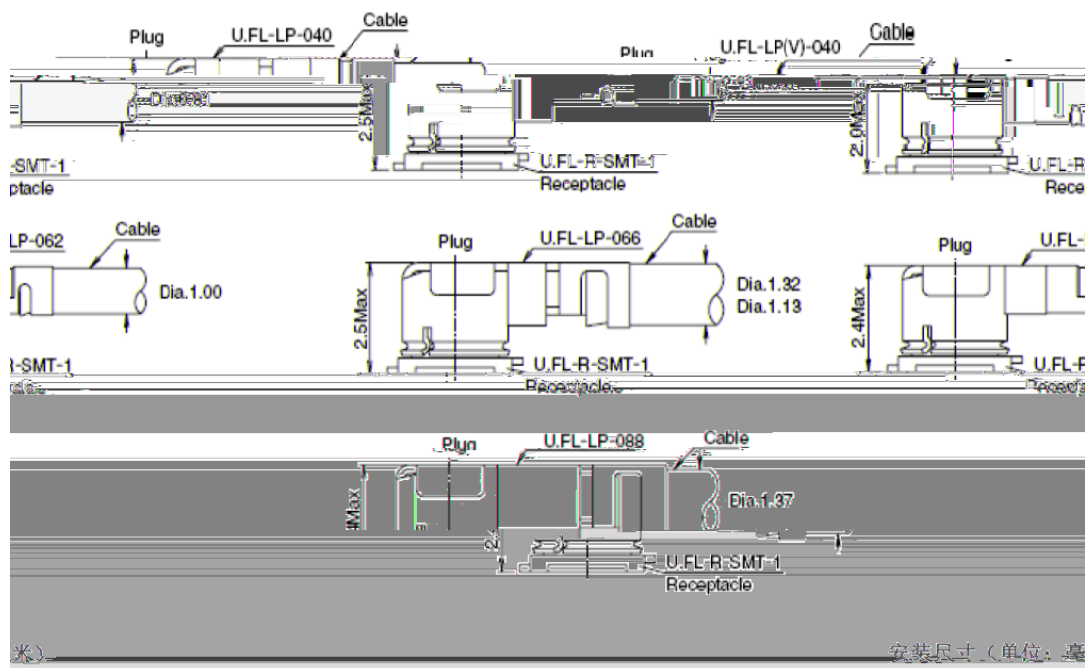
UU

台

Part No.	U.FL-LP-040	U.FL-LP-066	U.FL-LP-088	U.FL-LP-040	U.FL-LP-066	U.FL-LP-088
Max. Height (mm)	2.0mm Max. (1.9mm Nom.)	2.4mm Max. (2.3mm Nom.)	2.4mm Max. (2.3mm Nom.)	2.5mm Max. (2.4mm Nom.)	2.5mm Max. (2.4mm Nom.)	2.5mm Max. (2.4mm Nom.)
Weight (mg)	59.1	34.8	45.5	74.7	53.7	53.7
RoHS	YES					

U.FL-LP 连接线系列

UU



UU

9

7

即	-		
即	-		
即	-		
即	-		
即	-		
	-		

70

	即				
即	即				
		-			

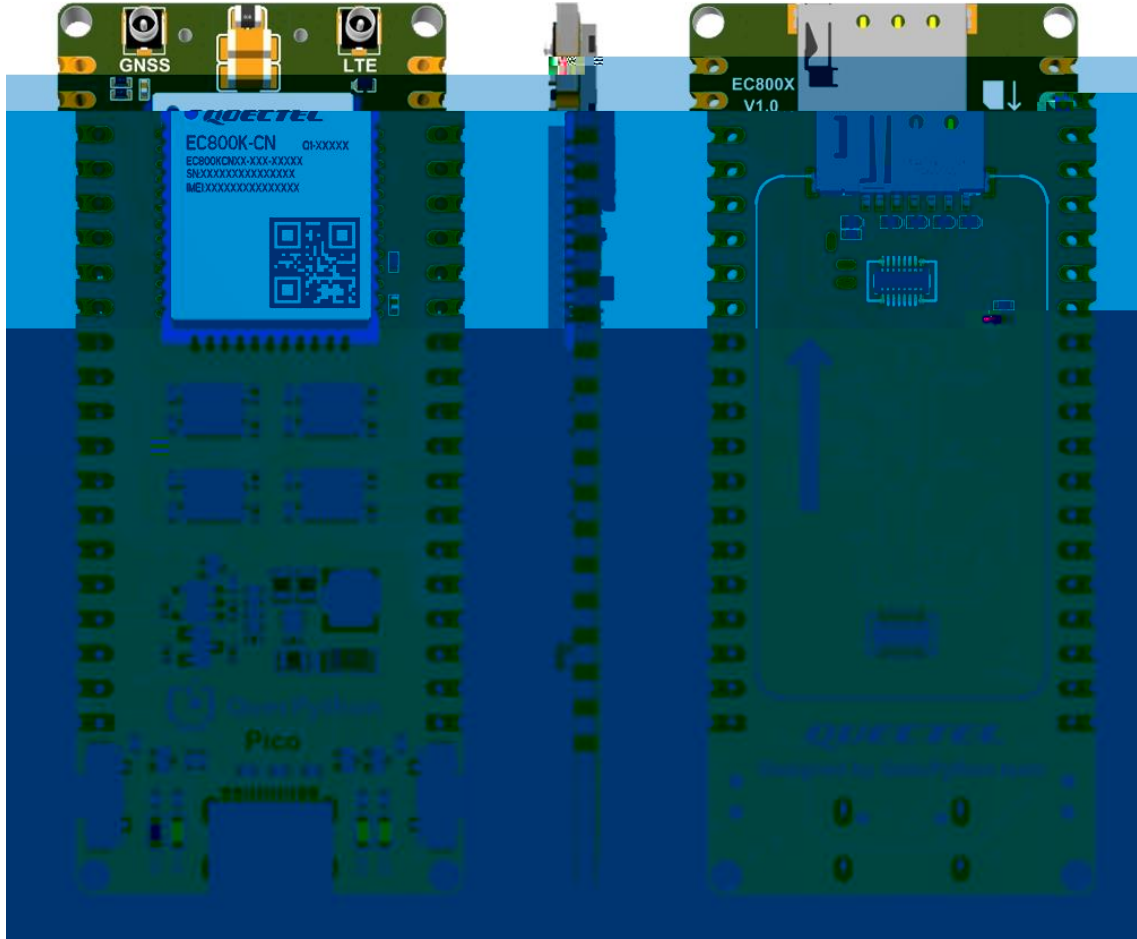
71

台

7 2

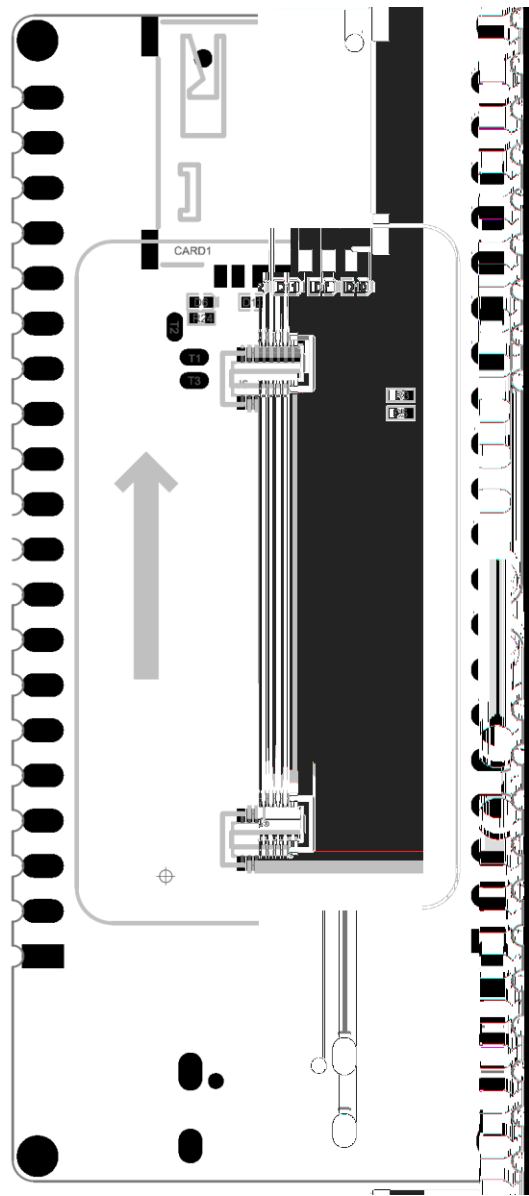
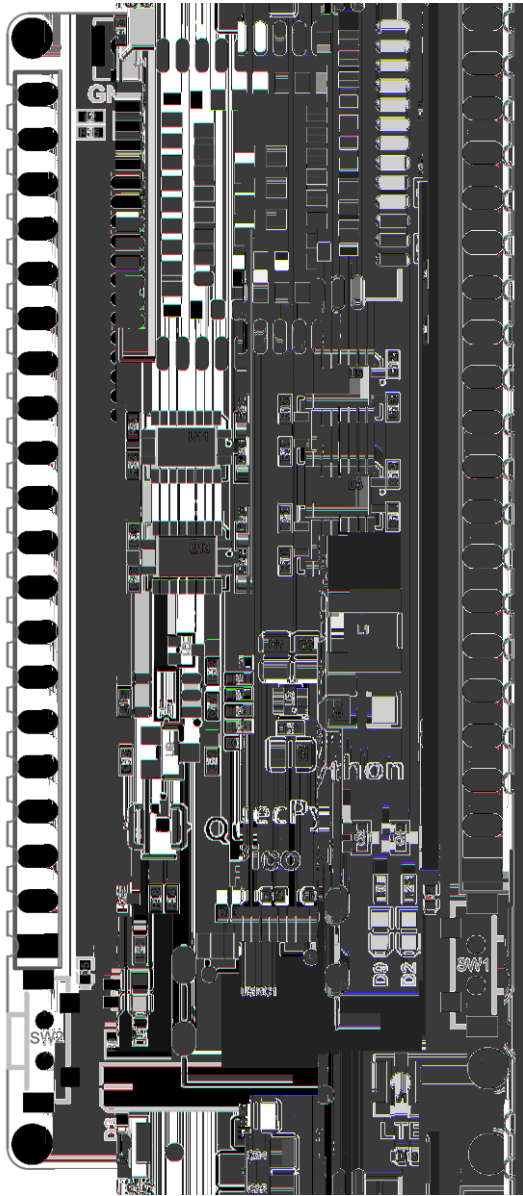
参数	最小值	典型值	最大值	单位
正常工作温度范围 ⁴	-35	+25	+75	°C
扩展工作温度范围 ⁵	-40	-	+85	°C
存储温度范围	-40	-	+90	°C

. 0



11

12



1

2

3

4

A

A

B

B

C

C

D

D

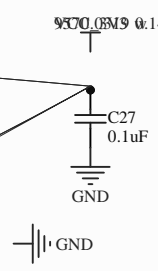
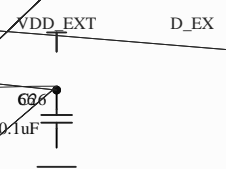
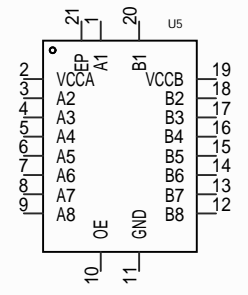
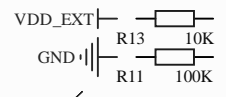
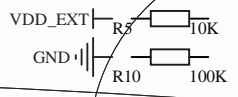
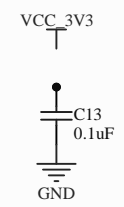
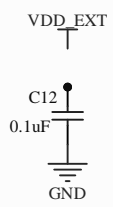
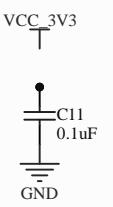
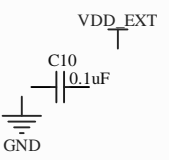
1

2

3

4

0.1

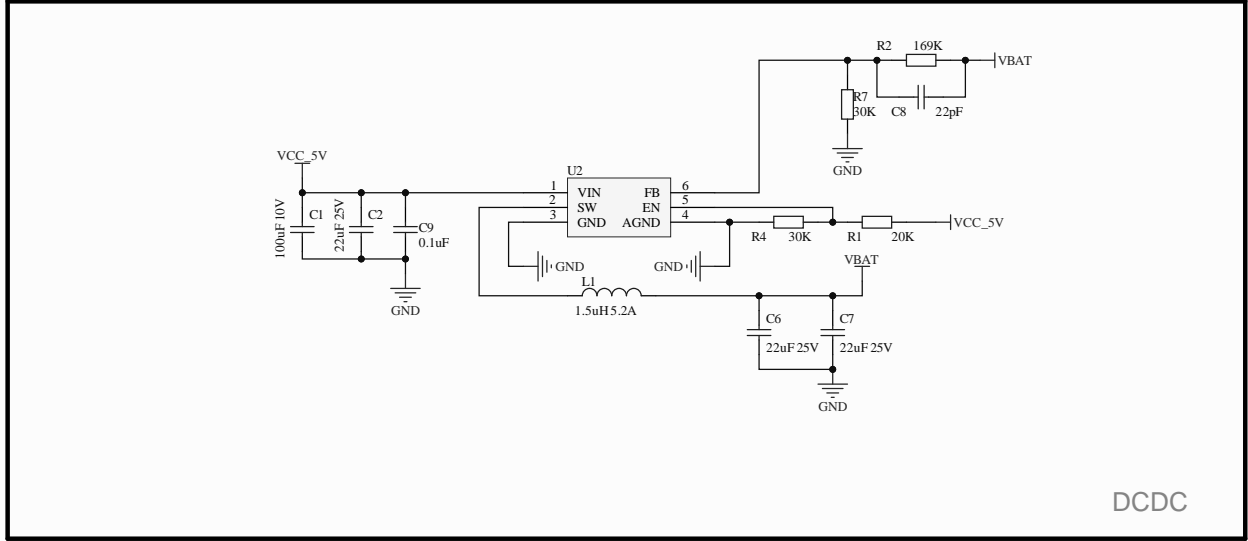


Level Translator

9370_0519 @:149 0.149 0.149 rB T6.8997 0 0 6.8997 644.dE)T0.5926 0 Td K7.690.05



LDO



DCDC

1

2

3

4

5

6

A

B

C

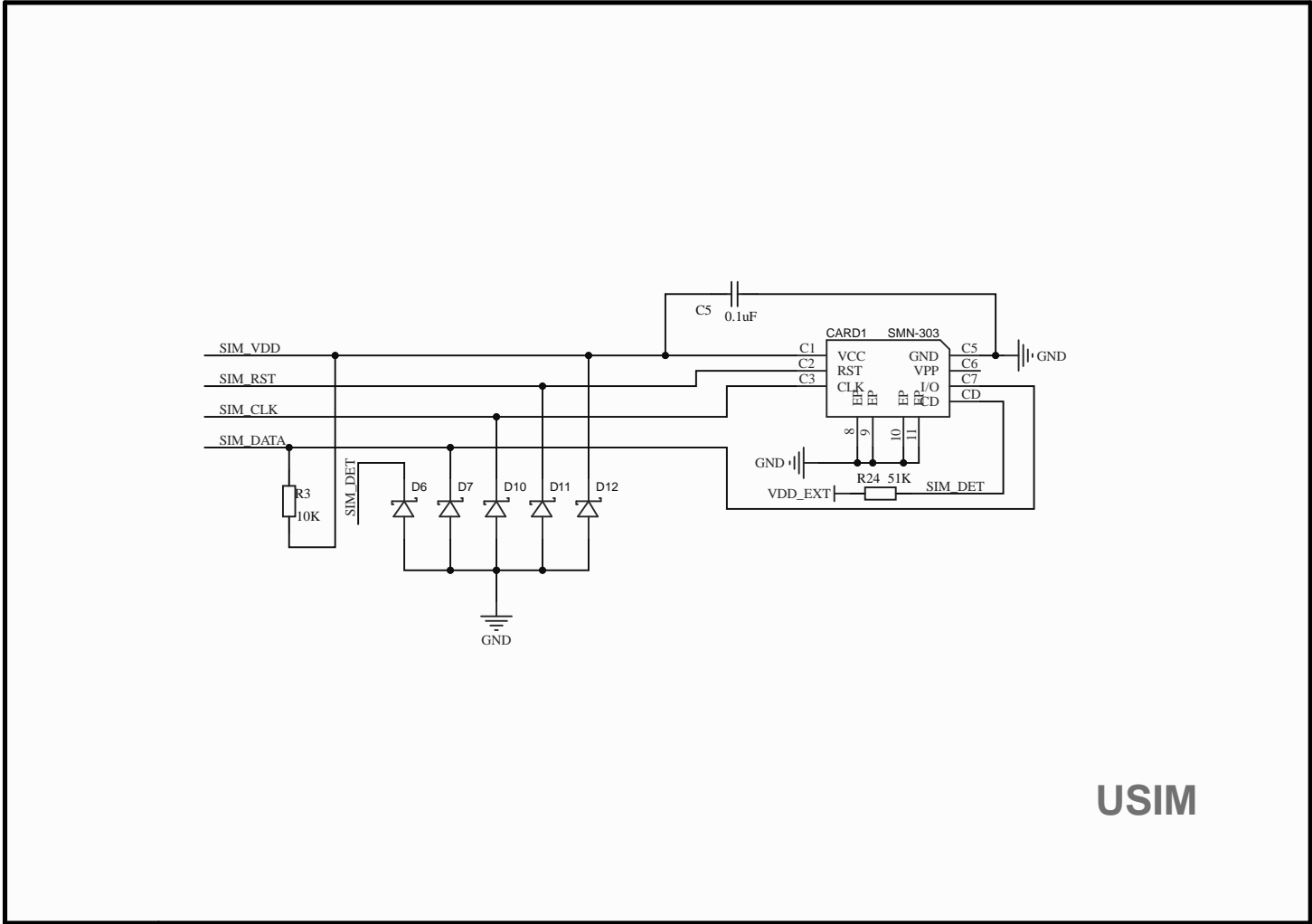
D

A

B

C

D



USIM

1

2

3

4

5

6